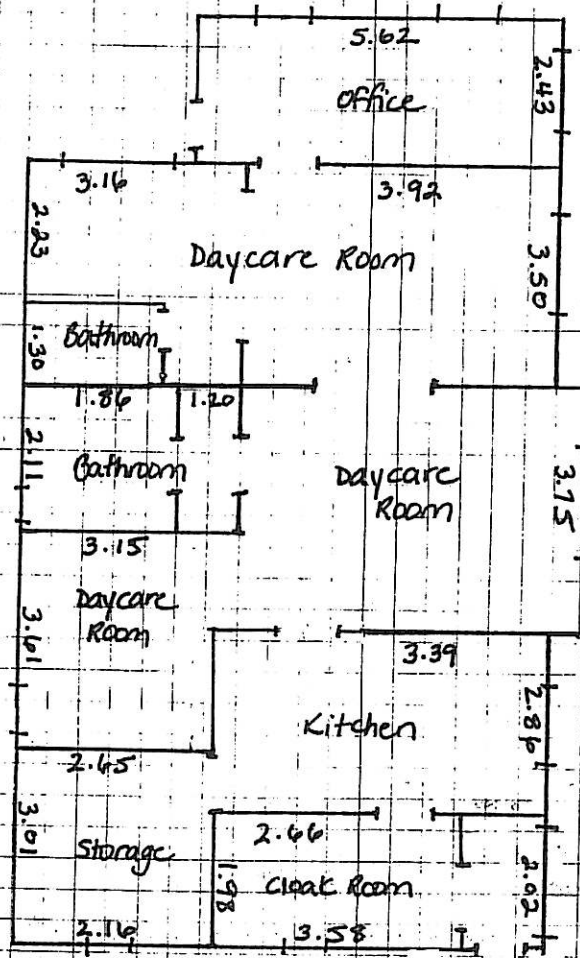


1369 RICHTER ST.

N →  
1 = .5 Meters



FULLER AVE

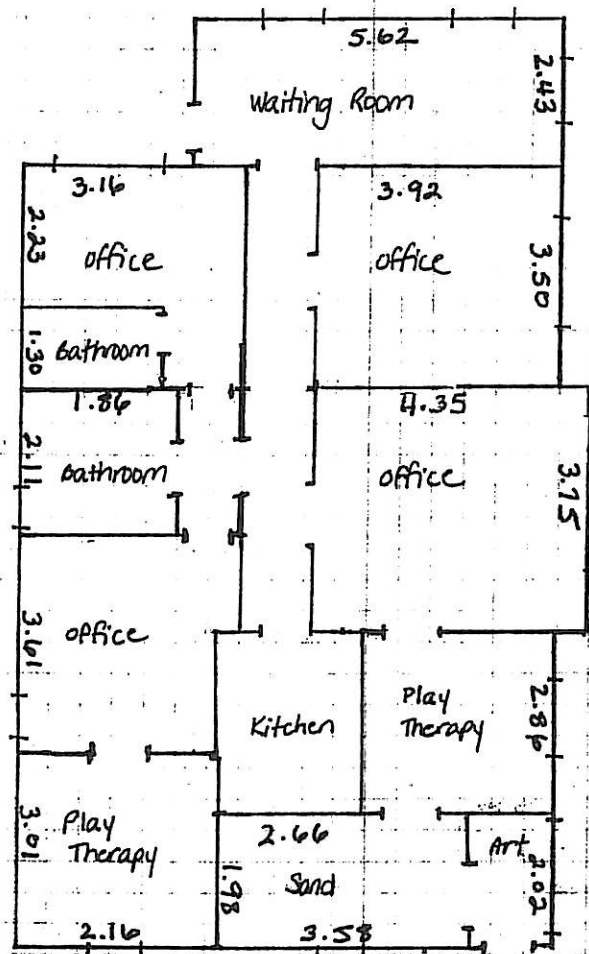


Existing Floor Plan

— = window  
| = door

1369 RICHTER ST.

N →  
1 = .5 Meters



FULLER AVE

\* Proposed Floor Plan

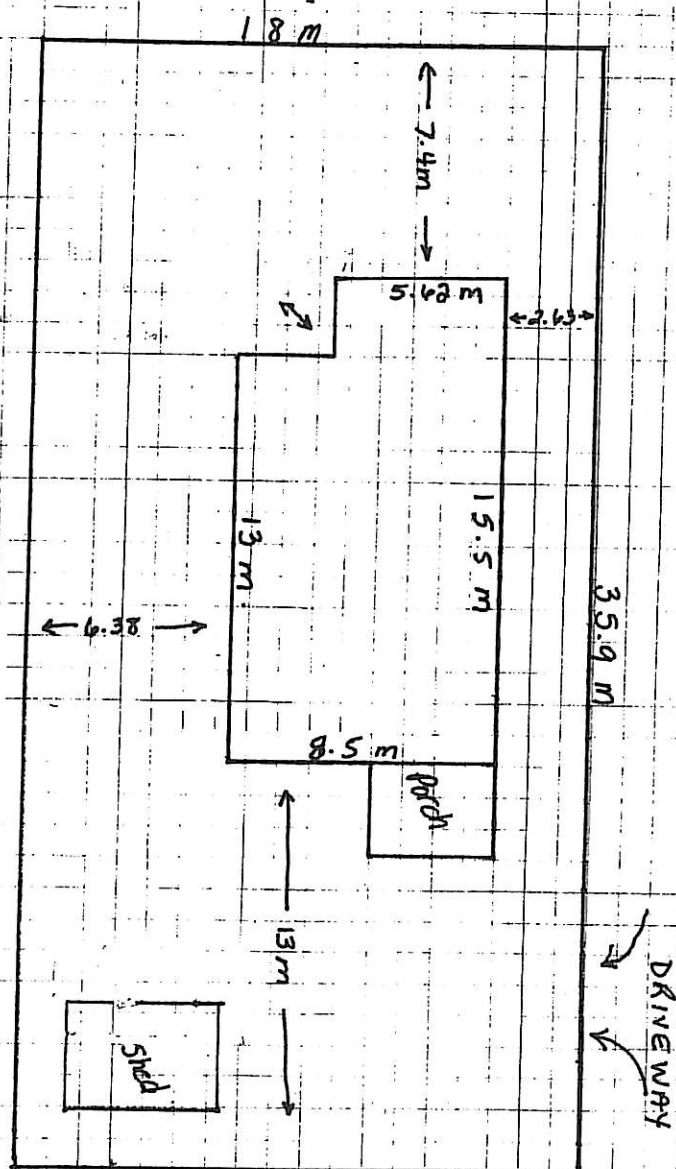
— = window  
| = door

Existing Site Plan

1369  
RICHTER ST

LOT 45  
OD 40

DL 138  
PLAN - 694



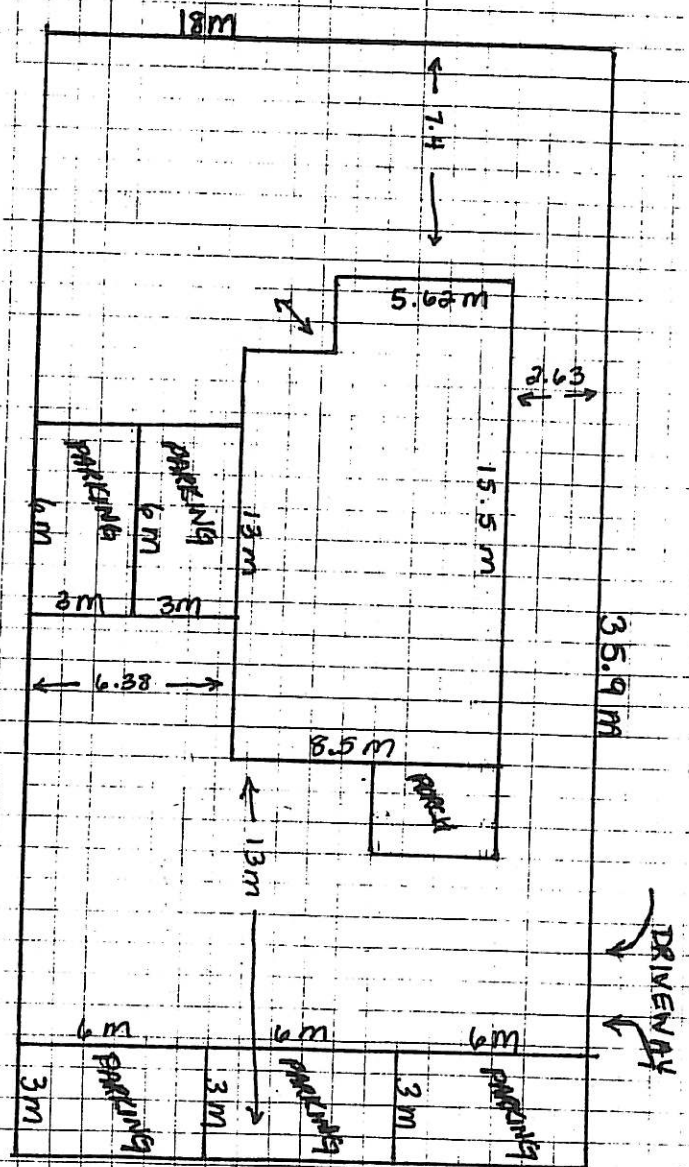
N4 FULLER AVE 1 = 1 m



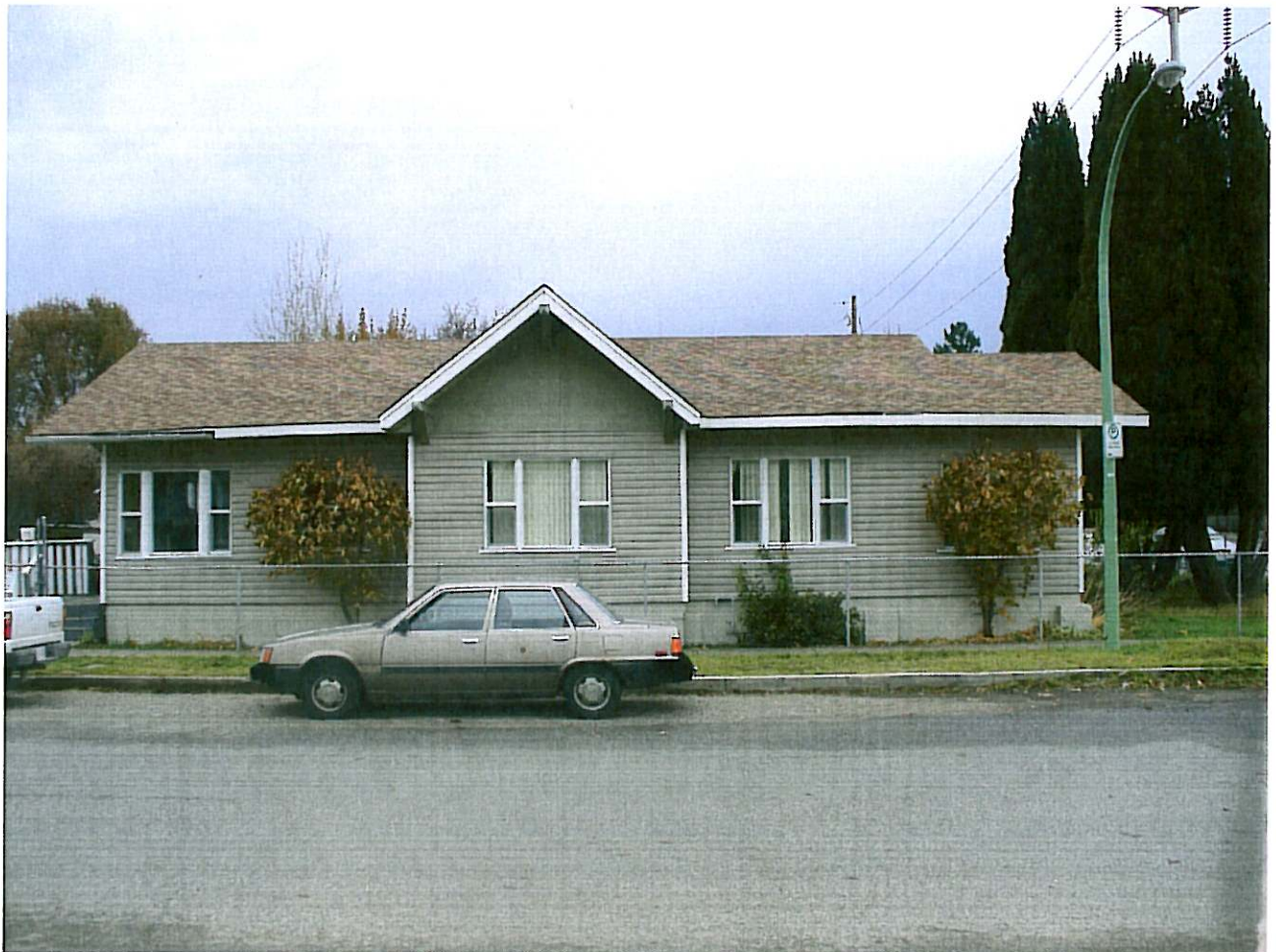
Proposed Site Plan

1369  
RICHTER ST.

LOT 45 DL 138 0041  
PLAN 694



NT FULLER AVE 1=1m







**SCHEDULE “A”**  
**Text Amendment No. TA06-0007 – Re: P2 – Education and**  
**Minor Institutional Zone**

<b>Proposed Amendments – Zoning Bylaw No. 8000</b>		
Section 2.2.3	Add definition for <b>HEALTH SERVICES, MINOR</b> , as follows: <b>HEALTH SERVICES, MINOR</b> means development used for the provision of child counselling services.	
Table 8.1 – Parking Schedule	Include the <b>HEALTH SERVICES, MINOR</b> use next to the parking regulation for <b>HEALTH SERVICES</b> :	
	<b>HEALTH SERVICES AND HEALTH SERVICES, MINOR</b>	5 per 100 m <sup>2</sup> GFA
Table 8.1 – Parking Schedule	Include a specific parking calculation for the <b>HEALTH SERVICES, MINOR</b> use for parcels less than 1,000 m <sup>2</sup> in area	
	<b>HEALTH SERVICES, MINOR</b> (on parcels less than 1,000 m <sup>2</sup> in area)	Four (4) parking spaces.
Section 16.2.2	P2- Education and Minor Institutional Zone (Principal Uses) – Add the following use: <b>HEALTH SERVICE, MINOR</b>	
Section 16.2.6	P2 – Education and Minor Institutional Zone (Other Regulations) – Add the following wording, under new section (c): For lots less than 1,000 m <sup>2</sup> in area, a <b>HEALTH SERVICES, MINOR</b> use shall not generate more than two (2) clients to the site from which the business is being operated at any given time.	
	P2 – Education and Minor Institutional Zone (Other Regulations) – Add the following wording, under new section (d): For lots less than 1,000 m <sup>2</sup> in area, no variation from the residential character and appearance of land or buildings shall be permitted for the purpose of accommodating a <b>HEALTH SERVICES, MINOR</b> use.	



<b>Proposed Amendments – Sign Bylaw 8235</b> <b>Section 6 – Specific Zone Regulations</b>			
Section 6.1	Immediately following that section dealing with Public and Institutional Zones (P1, P2, P3, P4, W1, and W2), add the following:		
	Notwithstanding provisions for P2 zone, restrict signage for the <b>HEALTH SERVICES, MINOR</b> use on parcels less than 1,000 m <sup>2</sup> to the following:		
	Fascia or Free-standing	1 per lot	1.0 m <sup>2</sup> maximum area. Max. 1.5 m for free-standing signage, measured from sidewalk elevation. Min. 1.0 m setback from property line for free-standing signage. No backlit signage; only low-watt ground lighting or pendant lighting.

**SCHEDULE “B”**  
**Text Amendment No. TA06-0007 – Re: P2 – Education and**  
**Minor Institutional Zone**

<b>Proposed Amendments – Zoning Bylaw No. 8000</b>		
Section 2.2.3	Add definition for <b>HEALTH SERVICES, MINOR</b> , as follows: <b>HEALTH SERVICES, MINOR</b> means development used for the provision of child counselling services.	
Table 8.1 – Parking Schedule	Include the <b>HEALTH SERVICES, MINOR</b> use next to the parking regulation for <b>HEALTH SERVICES</b> :	
	<b>HEALTH SERVICES AND HEALTH SERVICES, MINOR</b>	5 per 100 m <sup>2</sup> GFA
Table 8.1 – Parking Schedule	Include a specific parking calculation for the <b>HEALTH SERVICES, MINOR</b> use for parcels less than 1,000 m <sup>2</sup> in area	
	<b>HEALTH SERVICES, MINOR</b> (on parcels less than 1,000 m <sup>2</sup> in area)	Four (4) parking spaces.
Section 16.2.2	P2- Education and Minor Institutional Zone (Principal Uses) – Add the following use: <b>HEALTH SERVICE, MINOR</b>	
Section 16.2.6	P2 – Education and Minor Institutional Zone (Other Regulations) – Add the following wording, under new section (c): For lots less than 1,000 m <sup>2</sup> in area, a <b>HEALTH SERVICES, MINOR</b> use shall not generate more than four (4) clients to the site from which the business is being operated at any given time.	
	P2 – Education and Minor Institutional Zone (Other Regulations) – Add the following wording, under new section (d): For lots less than 1,000 m <sup>2</sup> in area, no variation from the residential character and appearance of land or buildings shall be permitted for the purpose of accommodating a <b>HEALTH SERVICES, MINOR</b> use.	



<b>Proposed Amendments – Sign Bylaw 8235</b> <b>Section 6 – Specific Zone Regulations</b>			
Section 6.1	Immediately following that section dealing with Public and Institutional Zones (P1, P2, P3, P4, W1, and W2), add the following:		
	Notwithstanding provisions for P2 zone, restrict signage for the <b>HEALTH SERVICES, MINOR</b> use on parcels less than 1,000 m <sup>2</sup> to the following:		
	Fascia or Free-standing	1 per lot	1.0 m <sup>2</sup> maximum area. Max. 1.5 m for free-standing signage, measured from sidewalk elevation. Min. 1.0 m setback from property line for free-standing signage. No backlit signage; only low-watt ground lighting or pendant lighting.